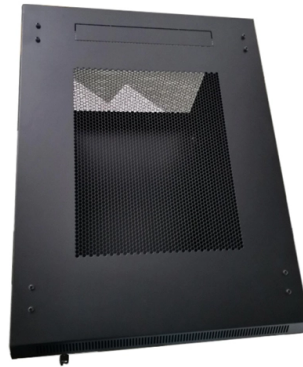


Switch Fiber Optic Interface Expansion Slot



Overview

An SFP port (Small Form-Factor Pluggable port) on a Gigabit switch is a dedicated slot designed to support SFP modules, enabling flexible data transmission. SFP ports' flexible media connections are in contrast to. SFP ports, also known as Small Form-Factor Pluggable ports, are essential components found in a variety of network and storage devices including switches, servers, routers, and network interface cards (NICs). An SFP interface on networking hardware is a modular slot for a media-specific transceiver, such as for a fiber-optic cable or a copper. With AXIS D8308 Fiber Aggregation Switch you can connect multiple Axis devices using fiber midspans over long distances. It also enables easy expansion by simply adding more fiber or network switches. Long-distance installations often require fiber optic cables to connect different sites because of. SFP port (SFP slots or SFP interfaces) is a recessed slot in a network device for accommodating a matching small form-factor pluggable (SFP) connector to enable data cables plugged in.

Article Content

Understanding SFP Port: A Comprehensive Guide

Configuring SFP Ports in Gigabit Switches Utilizing SFP Slots for Uplink Connectivity
Benefits of Implementing SFP Ports in Gigabit Switches

Fiber Optic Connector vs Ethernet Port, what is the

The optical port is what we usually call an optical board expansion slot that can be inserted into an optical fiber for long-distance data transmission; the Ethernet port

Configuring Fibre Channel Interfaces

Cisco Nexus 5000 Series switches provide up to eight physical Fibre Channel uplinks. The Fibre Channel interfaces are supported on optional expansion modules. The Fibre Channel plus Ethernet

What Is an SFP Port on a Gigabit Switch?

An SFP port (Small Form-Factor Pluggable port) on a Gigabit switch is a dedicated slot designed to support SFP modules, enabling flexible data

Understanding SFP Port: A Guide to Gigabit Ethernet

A: An RJ45 port is a standard Ethernet port that uses copper cables, while an SFP port is a modular interface that allows for different types of lines,

Amazon : Fiber Optic Network Interface Card

Discover high-performance fiber optic network interface cards for servers and desktops. Find single and dual port SFP+ adapters with reliable connectivity.

Small Form-factor Pluggable

OverviewSFP typesQSFPApplicationsStandardizationMechanical dimensionsDigital diagnostics monitoring

Small Form-factor Pluggable (SFP) is a compact, hot-pluggable network interface module format used for both telecommunication and data communications applications. An SFP interface on networking hardware is a modular slot for a media-specific transceiver, such as for a fiber-optic cable or a copper cable. The advantage of using SFPs compared to fixed interfaces (e.g. modular connectors in Ethernet switches) is t

Common Applications of SFP+ Interface

The SFP+ port is a high-speed optical-to-optical signal conversion port, mainly used for 10G Ethernet and Fiber Channel network applications. A key

Fiber optic switch cards are key components of modular switches and

Fiber optic switching cards, also known as fiber optic switching modules or fiber optic switching line cards, are common components in modular switches or routers. It provides fiber optic connectivity to

[AXIS D8308 Fiber Aggregation Switch | Axis](#)

With AXIS D8308 Fiber Aggregation Switch you can connect multiple Axis devices using fiber midspans over long distances. It also enables easy expansion by

[Understanding SFP Switches: The Essential Guide to Fiber and](#)

[Compatibility with Different Fiber Optic Cables Installation and Maintenance of SFP Transceivers Benefits of Using a Managed SFP Switch Advantages of VLAN Support How Managed](#)

[PCI Express Over Fiber Optic Extensions](#)

PCI Express over fiber optic extension allows standard PCI Express cards to operate remotely from the host computer. No additional programming or drivers are required.

[What is SFP Port? Everything You Need to Know](#)

What is an SFP port? The SFP port also refers to a Small Form-factor Pluggable port. It is a compact mechanical slot that accepts an SFP module

[What Is an SFP Port on a Gigabit Switch? Full Guide 2026](#)

What is an SFP Port on a Gigabit Switch? An SFP port is a compact, hot-swappable slot designed to accept SFP transceiver modules. By inserting

[Gigabit SFP Network Switch Selection Guide for 2025](#)

A Gigabit SFP switch is a network switch that primarily operates at 1 Gigabit per second and is equipped with Small Form-Factor Pluggable (SFP) ports, which are hot-swappable interface

[A Guide to SFP Ports on Gigabit Switches](#)

An SFP port is a compact, hot-swappable interface on a network device, such as a Gigabit switch, router, or server. The primary function of an

[An introduction to SFP ports on a Gigabit switch](#)

Small form-factor pluggable is a hot-swappable interface used to connect network and storage switches and transfer data. Switches with SFP ports can connect to fiber optic and Ethernet

[Catalyst 6500 Series 10](#)

This data sheet describes the benefits, specifications, and ordering information for the Catalyst 6500 Series 10- and 100-MBPS Ethernet Fiber-Based

[What Is An SFP Port? The Ultimate Guide To Your](#)

The sfp port on your switch isn't just a dust collector—it is your gateway to a faster, longer-range network. Whether you are connecting a warehouse 500 meters

What the Switch SFP Port Is and How It Enables

An SFP slot has the appearance of a small cage mounted on a switch or router. The modular nature of the SFP port provides a clean, standardized

Cisco Fast Ethernet SFP Modules

Overview Cisco offers a range of Fast Ethernet SFP Interface Converters. The product portfolio includes 100BASE-FX, 100BASE-LX, and 100BASE-BX SFPs.

Configuring Fibre Channel Interfaces [Cisco Nexus 5000

On Cisco Nexus 5000 Series switches, Fibre Channel capability is included in the Storage Protocol Services license. Ensure that you have the correct license

What is SFP Port? Everything You Need to Know

An SFP port is a physically small slot in a networking device that accepts an SFP module. This definitive guide tells you everything about it.

What Is an SFP Port on a Gigabit Switch? -

What is an SFP Port on a Gigabit Switch? An SFP port (Small Form-factor Pluggable port) is a modular interface found on switches, routers, network

Understanding SFP Switches: The Essential Guide to Fiber and

SFP switches incorporate Ethernet switches through SFP ports that expand connectivity possibilities. These ports accept modular transceiver plugs, which permit fiber and copper Ethernet

Cisco MDS 9132T 32-Gbps 32-Port Fibre Channel

The Cisco ® MDS 9132T 32-Gbps 32-Port Fibre Channel switch also provides unmatched flexibility through a unique port expansion module (Figure 2)

What is SFP Port on a Switch? SFP Meaning Explained

Learn what an SFP port (SFP slot or SFP interface) is, how it works on a switch, and its role in networking. Discover the benefits of small form-factor

Amazon : Fiber Switches

Discover fiber switches designed for reliable network connectivity. Browse 10G, 2.5G, and gigabit options to expand your bandwidth.

What You Need to Know About the SFP Port on a

Optical fibers are used by Fiber SFP modules for this purpose and hence they can achieve tremendous speeds over longer distances without much

Contact Us

For more information, pricing, or custom solutions, please contact us:

Website: <https://www.fivesunsecoenergy.fr>

Email: sales@fivesunsecoenergy.fr

Phone: +33 6 41 83 57 29

Address: 5 Rue de la Bourse, 75002 Paris, France

This document is for informational purposes only. Specifications subject to change without notice.

