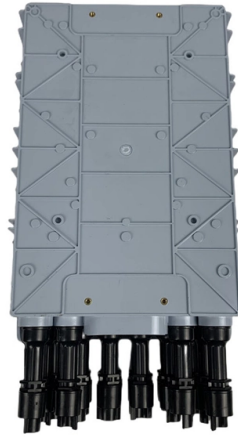


The fiber optic switch in the building



Overview

A fiber-optic switch allows you to connect two or more fiber-optic cables to form a network. These can behave like a typical Ethernet switch. Property networks in businesses and homes, traditionally, have been built with twisted copper cable, LAN cable of the type CAT 5, 6 or 7. Although the capacity of these networks is in many cases sufficient for today's needs, there is a limitation in transmission distances with typical cable lengths. A pair of fiber to Ethernet media converters can create a beneficial electrical barrier when running Ethernet between buildings or to outdoor Power over Ethernet (PoE) devices such as cameras and Wi-Fi access points. If you are familiar with FOA's other design materials, you know we don't give you formulas or outlines to follow. This guide will detail the step-by-step process of new construction fiber optic cable installation, discuss its benefits, and share best practices for integrating this technology into new. Fiber to the Home (FTTH) is a key technology in delivering high-speed internet directly to homes and businesses. Earlier. Commercial buildings are increasingly wired with fiber optic cable to future-proof installations and create more reliable, higher-bandwidth and faster speed network and video infrastructures.



Article Content

Reconfigurable optical add-drop multiplexer

In optical communication, a reconfigurable optical add-drop multiplexer (ROADM) is a form of optical add-drop multiplexer that adds the ability to remotely switch traffic from a wavelength-division

Application Guide: Wiring Commercial Buildings with

Commercial buildings are increasingly wired with fiber optic cable to future-proof installations and create more reliable, higher-bandwidth and faster speed network

Top Fiber Optics Stocks In 2026

Best Fiber Optics Stocks Moving data swiftly is crucial for modern technology infrastructure. Even better, moving from traditional switch architecture to optical switch architecture

WORLD WIDE WEB JOURNAL Home

will open to start the export process. The process may take but once it finishes a file will be downloadable from your browser. You may continue to browse the DL while the export process is in

Best Practice In-Building Fiber Installation

To get fiber into a premises, a cable has to be routed from the point of presence (the Outside Distribution Box, in this instance) into the building through the wall, and plugged into a further distribution box or

AOC, DAC, Fiber Optic Transceivers | One-Stop Shop

Fiber Optical Cable OM3 Duplex OM5 Duplex OS2 Simplex MPO-MPO Extension QSA (40G/100G) SFP+/QSFP Extension Loopback SFP+/SFP28 Loopback Fiber

All you need to know about installing fiber to buildings

In practice, a fiber network has no limitations in transmission distance, and therefore, no connection rooms, switches and panels are needed on every floor or every building.

Fiber to the Building: A Comprehensive Guide

This term refers to the installation and use of optical fiber directly to individual buildings such as residences, apartment buildings, and businesses. In

Fiber to the Building (FTTB) 2026

FTTB is a fiber optic deployment architecture where high-speed fiber cables extend from an internet service provider's main network directly to the entry point or telecommunications room of a multi-unit

Fiber Optical Switches – Secure And Reliable Solutions

Discover Fibersystem's fiber optical switches for high-speed, secure, and reliable data management. Contact us to learn how they fit your network needs!

Optical Switches: Singlemode/Multimode Fiber Optic

Lfiber's optical switches (singlemode/multimode fiber switches) are micro-optic-based, opto-mechanical switches. These fiber switches offer a cost-effective way

Latest Fiber Optic Technology 2025 for Faster Networks

Stay ahead with the latest fiber optic technology in 2025. Learn innovations driving speed, efficiency, and smarter network solutions.

Top Fiber Optics Stocks In 2026 | FXEmpire

The building of AI data centers is going from a technology story to a full-scale infrastructure play. Hyperscaler spending on AI-related builds is expected to hit \$700 billion this year

The FOA Reference For Fiber Optics

Rather than telling you how to design a FTTH network, we will illustrate some of the different network architectures, construction methods, etc. possible, then offer options that may work for your network

THE PHOTONICS ROTATION Almost nobody is watching photonics.

8. \$GLW supplies the specialty glass + fiber needed for the optical transport layer behind AI infrastructure. 9. \$JBL benefits from building and scaling the actual hardware behind networking

Hyperoptic | Full Fibre Optic Broadband Provider

Hyper Fast & Hyper Reliable Full Fibre Broadband. Accelerate with equally fast upload and download speeds on our 150 Mb to 1Gb packages. Check out our

Set Up a Fiber-Optic Network in Your Home or Office

With a fiber switch combined with a fiber network adapter, you could connect fiber directly to your desktop computer or server. Note that the switch

A Simple Guide to Fiber Optic Cabling for New

Explore the benefits and process of installing fiber optics in new construction for improved connectivity and future-proof infrastructure. Contact Us today!

New Construction Fiber Optic Cabling Overview & Guide

Learn about new construction fiber optic solutions that offer the fastest internet speeds and reliable connectivity for new homes and buildings.

Optical networks

An optical transport network is a high-speed communication system that sends light signals over fiber-optic cables to move large amounts of data across long

FTTH: The Ultimate Guide to Fiber Optic Network

Fiber to the Home (FTTH) is a key technology in delivering high-speed internet directly to homes and businesses. This tutorial explores the essential aspects of

Contact Us

For more information, pricing, or custom solutions, please contact us:

Website: <https://www.fivesunsecoenergy.fr>

Email: sales@fivesunsecoenergy.fr

Phone: +33 6 41 83 57 29

Address: 5 Rue de la Bourse, 75002 Paris, France

This document is for informational purposes only. Specifications subject to change without notice.

